

Traffic Update 2022



ROADWAY PLAN



SHORT TERM (1-2 YEARS)

- ① Plainfield roundabout

MEDIUM TERM (2-5 YEARS)

- ② Glendale-Milford Corridor
(East - RHH to I-71)

LONG TERM (5+ YEARS)

- ③ Glendale-Milford Corridor
(West - Lake Forest to Plainfield)
- ④ Grooms Road connector

LEGEND

Annual Average Daily Traffic

- 30,000+
- 25,000 - 29,999
- 20,000 - 24,999
- 10,000 - 19,999
- 0 - 9,999

- Major Gateways
- - - Proposed Roadway



SHORT TERM (1-2 YEARS)

- Signal timing updates
- Glendale-Milford / Pfeiffer
- RHH South
- Connect Cooper/Creek, Plainfield/Cooper Intersections and City Hall

MEDIUM TERM (2-5 YEARS)

- Incrementally implement the central signal system
- Complete Fiber Connections at Glendale-Milford & Cornell systems

LONG TERM (5+ YEARS)

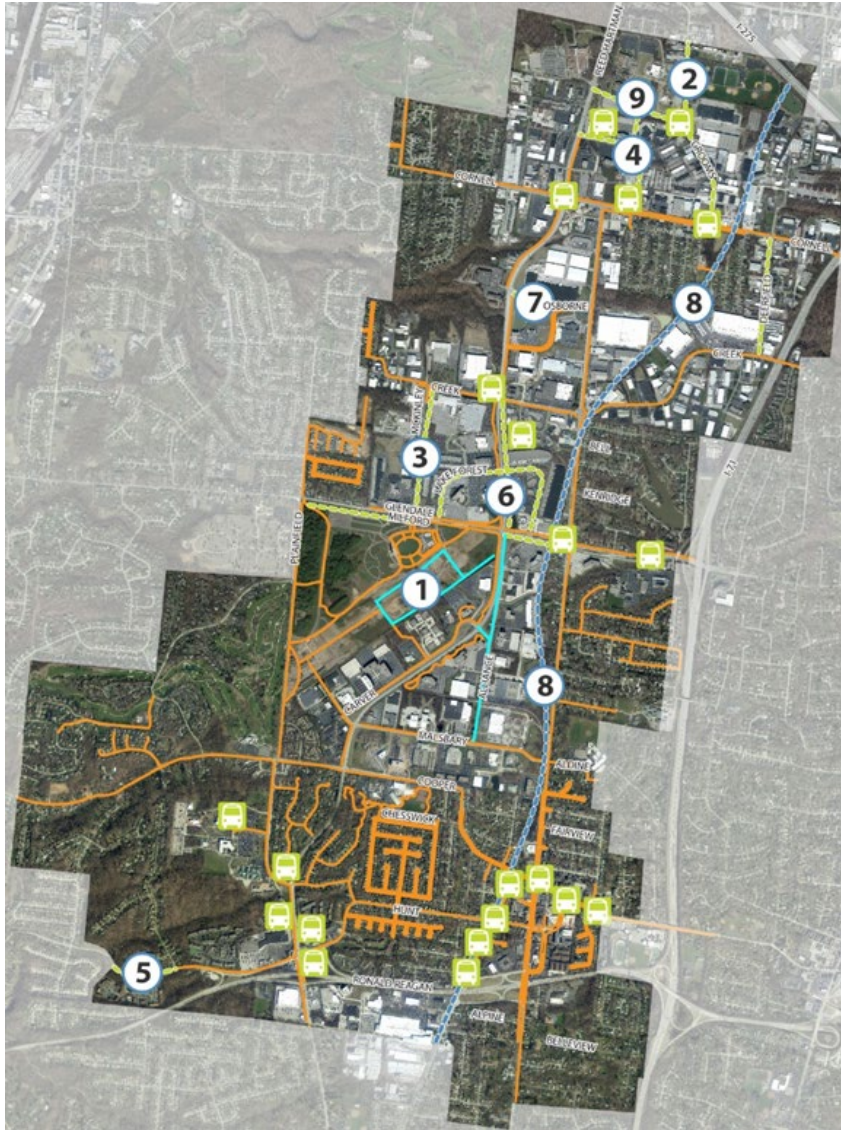
- Capture EMS calls to trigger signal pre-emption (RHH to G-M)
- Complete connectivity of system & communication plan with buildings
- Connect Grooms & Kemper, Business Way & Kemper Intersections via radio to central system

LEGEND

- RHH North Central System
- Cornell
- Glendale Milford / Pfeiffer
- RHH South
- Downtown
- Proposed Fiber Connection
- Existing Fiber Connection
- Proposed Roadway
- Managed Intersection
- Unmanaged Intersection
- Roundabout

CENTRAL SYSTEM BENEFITS

- No Boundaries - Coordinate across arterials
- Always on communications providing warnings and alerts in real-time
- Observe & download multiple intersections at the same time
- Enhanced troubleshooting of intersection malfunctions
- Signal performance measures to evaluate and maintain timings
- Creates infrastructure for "Smart City" communications
- Automated signal performance measures through recommended plan generation
- Install comprehensive CCTV system for "eyes on the road" traffic management and real-time road conditions



SHORT TERM (1-2 YEARS)

- ① Sidewalks Completed 2020-2022

MEDIUM TERM (2-5 YEARS)

- ② Grooms Road Sidewalk
- ③ McKinley Road Sidewalk
- ④ Cornell Park Drive Sidewalk
- ⑤ Hunt Road Sidewalk Extension to Reading
- ⑥ RHH Sidewalk between Glendale-Milford and Creek

LONG TERM (5+ YEARS)

- ⑦ Osborne Road Sidewalk
- ⑧ Rails-to-Trails Corridor
- ⑨ Grooms Road Connector Sidewalk

LEGEND

-  Bus Stops
-  Existing Sidewalk
-  Sidewalks Completed 2020-2022
-  Proposed Sidewalk / Path
-  Proposed Rail-to-Trail

